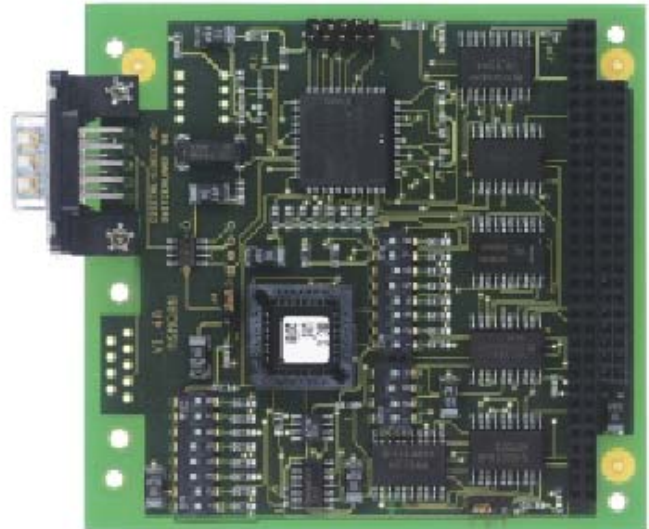




MSMCAN104 - CAN Port Board with Bosch Chip

Features

- CAN-Controller INTEL i82C527
- Supports V2.0 Specification
- Meets standard ISO/DIS 11898
- Standard data frames
- Extended data frames
- 15 message objects
- Programmable but rates
- Driver output 50mA
- Speed up to 500kBaud
- Single 5 Volt supply
- Operating Temperature: -25C to 70C



Technical Specifications

FEATURE	MSMCAN104
Part No.	801034
Function	CAN Controller
Controller	i82C527
Connector	CAN
Bus	ISA
Onboard Flash	-
Remarks	-
Power Normal	5V/250mA (typ.)
Power Suspended	5V/250mA (typ.)
Operating Temperature	-25°C to +70°C
Extended Temperature	-40°C to +85°C
Weight (gr)	50
MTBF	>100'000h

Description

The MICROSPACE CAN Module performs all serial communication functions such as transmission and reception of messages, message filtering, transmit search, and interrupt search with minimal interaction from the host CPU. The MSMCAN supports the standard and the extended message from in CAN specification 2.0 Part B. Due to the backward compatible nature of the MSMCAN module, the standard message frames in CAN specification 2.0 Part A are also fully met. The MSMCAN provides storage for 15 message objects of 8byte data length. Each message object can be configured as either transmit or receive except for the last message object.

The MSMCAN uses a physical CAN bus interface for high speed applications up to 500 kBaud. The interface provides transmit capability to the differential bus and differential receive capability from the CAN bus. Different driver software packages are available for the MSMCAN.

Ordering Information

Item Code	Part #	Description
MSMCAN104	801034	CAN Port Board with Bosch Chip

Data subject to change without notice